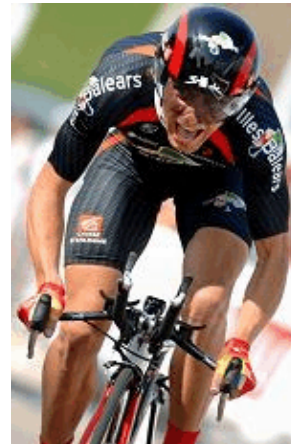


Tom's Farm Time Trials In Corona

Presented By **Pacific Sunset Velo**



Schedule for 2008

Sunday, January 13
Sunday, February 17
Sunday, October 19
Thanksgiving Day, November 27
Sunday, December 14

Categories

USCF Categories

SENIOR MEN 1/2/3, 4/5
MASTERS 30+, 40+, 50+ & 60+
SENIOR WOMEN 1/4 Junior Men 10/14 & 15/18

Public

UNLICENSED CATEGORIES
MEN 18-30, 31-35, 36-40 & 41+
WOMEN 18+ and Tandems

Rules: All USCF rules apply. Helmet's Mandatory at all time while on your bike. Shirts must cover shoulders. No faring or fixed gears allowed.

Course: 8 1/2 miles total, out and back. One rise approx. 6/10 of a mile, then rolling out and back with a rise at the finish. **Course is open to traffic.**

Fee: USCF Licensed Riders \$20.00, Public \$20.00. Fee includes insurance.

One day license \$10.00. **Race day registration only.**

Awards: 1st place in all categories will receive medals and ribbons to 2nd to 5th placement.

Registration area: In extra RV parking lot next to Tom's Farm. Registration opens at 7:00am & closes at 8:45am.....First rider off at 9:00am.

After you have finished your time trial, please do not hang around the finish. Go back to Tom's Farm parking lot; we will meet there for results and awards.

Directions: Tom's Farm is located south of Corona: Take I-15 south and exit Temescal Canyon Road, follow sign's to Tom's Farm. Approx. 1 blocks from freeway. Park on the right side in Extra RV parking lot. Please do not park in Tom's Farm parking lot.

Restrooms located @ Carl's Jr., Tom's Farm or the ARCO gas station next to Carl's Jr., also in the Extra RV parking lot. Please!!! use them and not the landscape.

Questions...Call Pacific Sunset Velo @ 760-244-4642

